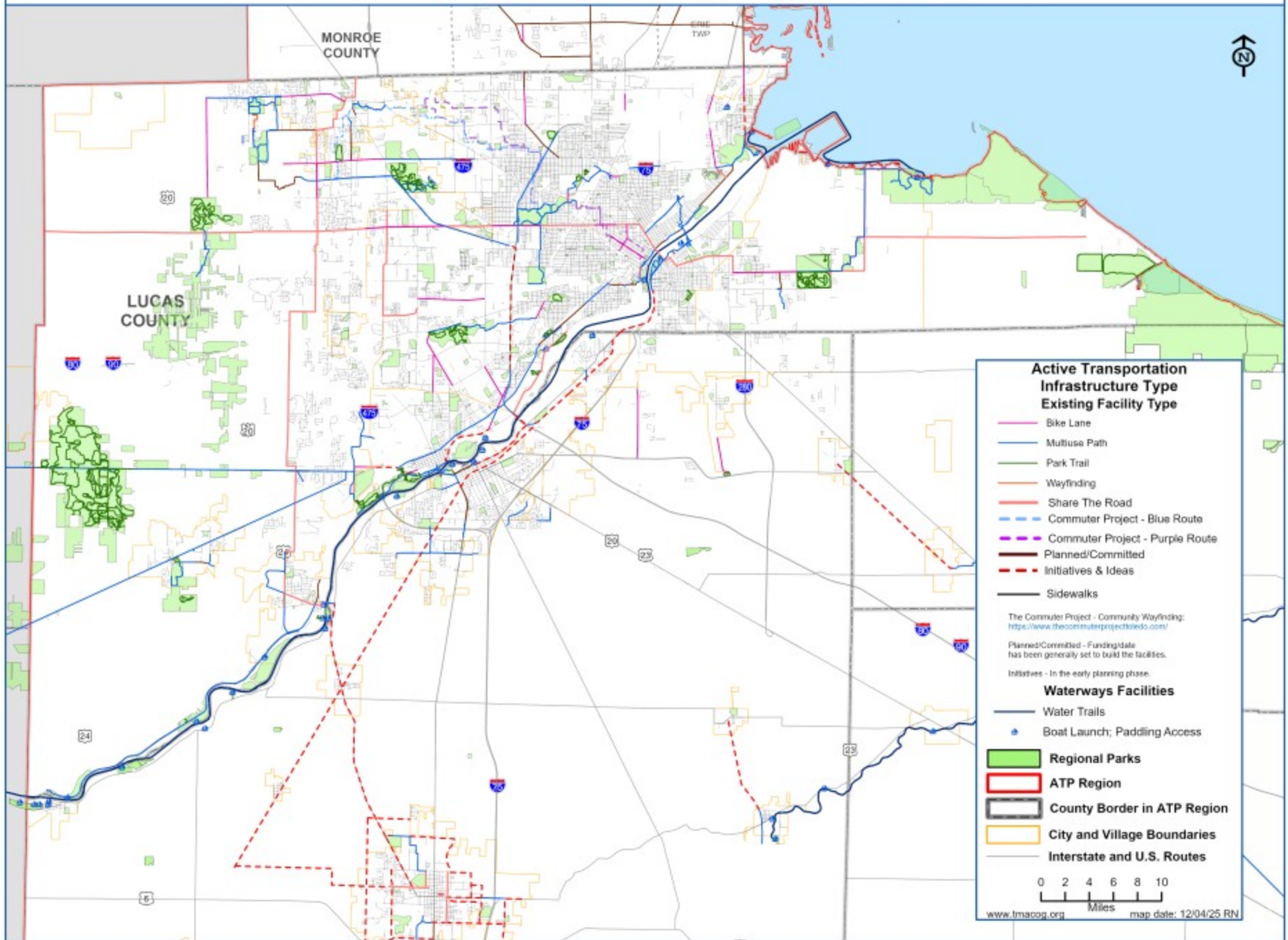
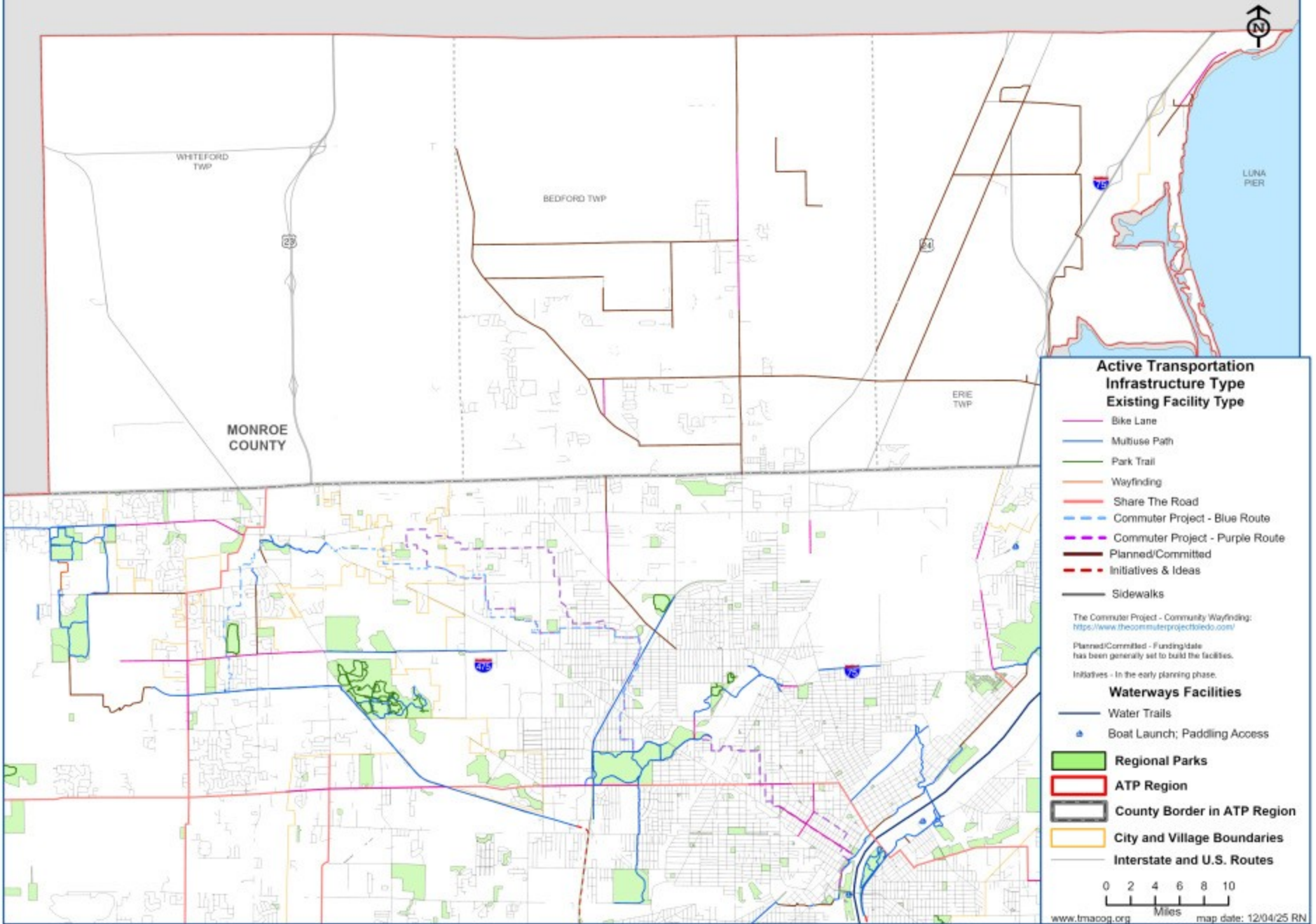


Lucas County Active Transportation Infrastructure



Monroe County Active Transportation Infrastructure

MONROE COUNTY



Active Transportation Infrastructure Type

Existing Facility Type

- Bike Lane
- Multiuse Path
- Park Trail
- Wayfinding
- Share The Road
- - - Commuter Project - Blue Route
- - - Commuter Project - Purple Route
- Planned/Committed
- - - Initiatives & Ideas
- Sidewalks

The Commuter Project - Community Wayfinding:
<https://www.thecommuterprojecttoledo.com/>

Planned/Committed - Funding/date
 has been generally set to build the facilities.

Initiatives - In the early planning phase.

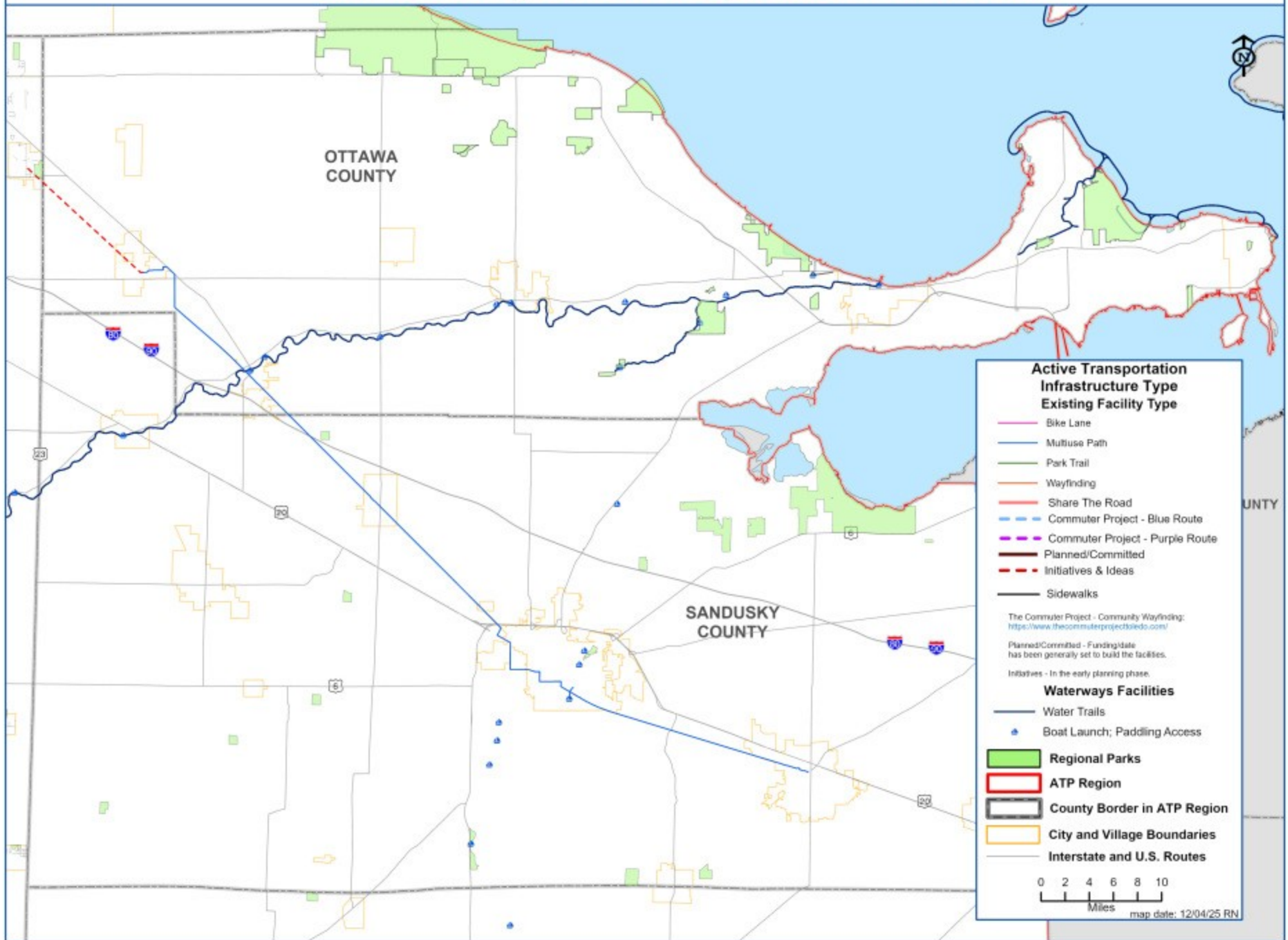
Waterways Facilities

- Water Trails
- ▲ Boat Launch; Paddling Access

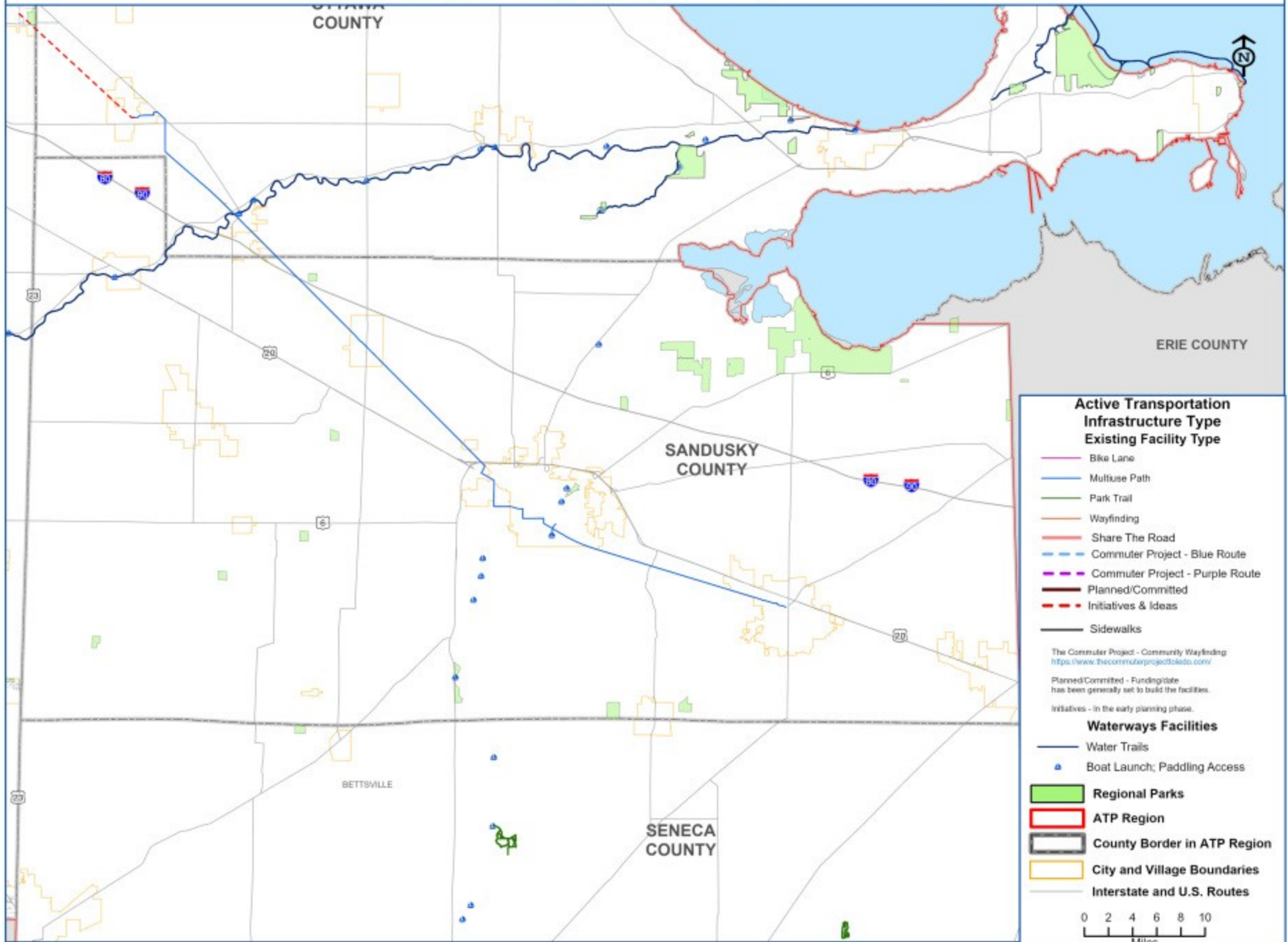
- Regional Parks
- ATP Region
- County Border in ATP Region
- City and Village Boundaries
- Interstate and U.S. Routes



Ottawa County Active Transportation Infrastructure



Sandusky County Active Transportation Infrastructure



Active Transportation Infrastructure Type

- Existing Facility Type**
- Bike Lane
 - Multiuse Path
 - Park Trail
 - Wayfinding
 - Share The Road
 - - - Commuter Project - Blue Route
 - - - Commuter Project - Purple Route
 - Planned/Committed
 - - - Initiatives & Ideas
 - Sidewalks

The Commuter Project - Community Wayfinding
<https://www.thecommuterprojecttoledo.com/>

Planned/Committed - Funding/date has been generally set to build the facilities.

Initiatives - in the early planning phase.

Waterways Facilities

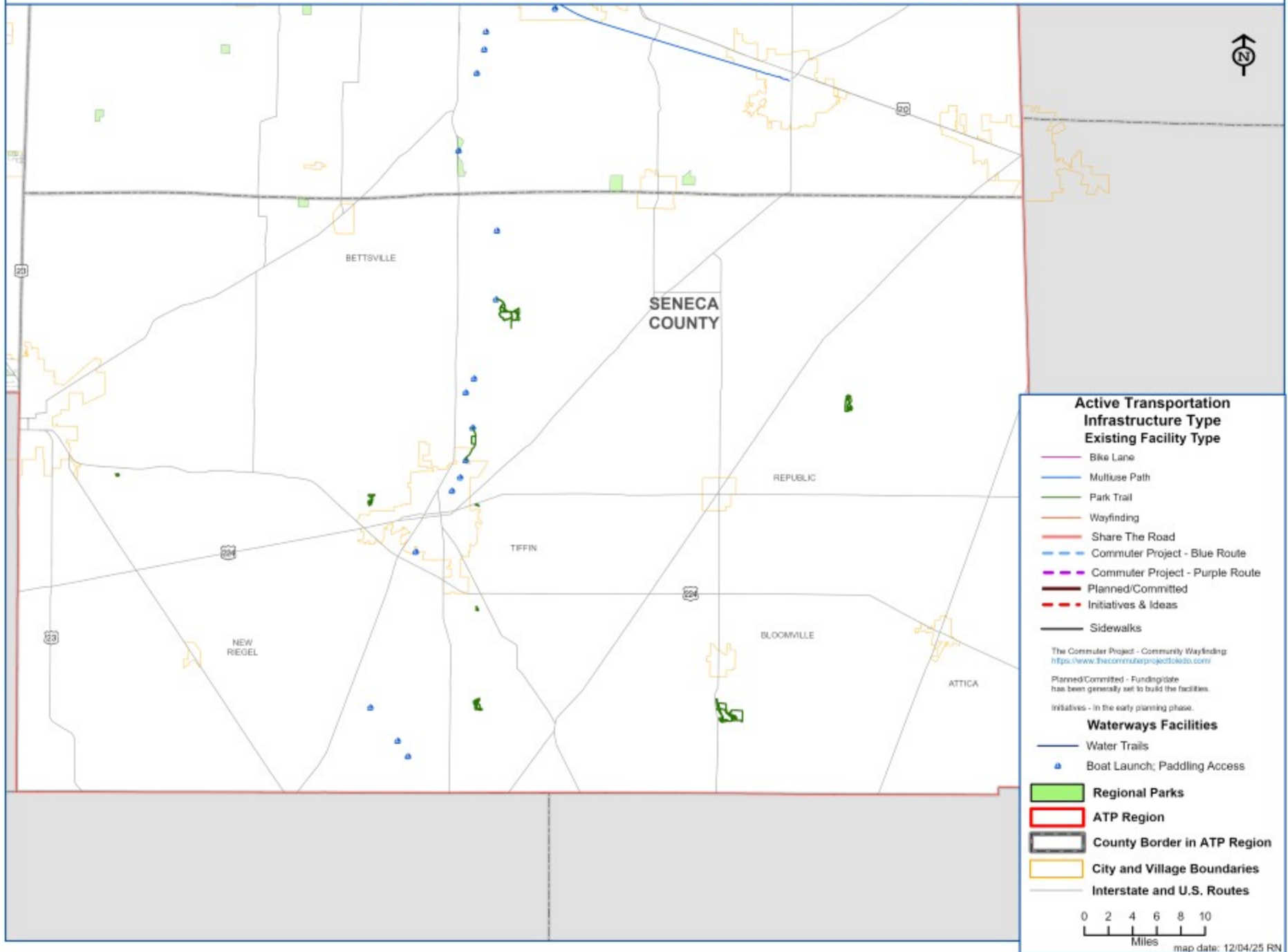
- Water Trails
- Boat Launch; Paddling Access

- Regional Parks
- ATP Region
- County Border in ATP Region
- City and Village Boundaries
- Interstate and U.S. Routes



map date: 12/04/25 RN

Seneca County Active Transportation Infrastructure



Wood County Active Transportation Infrastructure

