

## ODOT 2023 Truck Run Option List

### Truck Chassis Options

- 1) Chassis Axles
  - a) Single Axle Chassis **\$108,418.39**
  - b) Tandem Axle Chassis **\$119,949.65**
- 2) Chassis Length
  - a) Single Axle
    - i) 102 inch Cab to Axle (Standard)
  - b) Tandem Axle
    - i) 102 in Cab to Trunnion **\$0**
    - ii) 108 in Cab to Trunnion **\$0**
    - iii) 142 in Cab to Trunnion **\$0**
- 3) 3 Stage Engine Compression Brake
  - a) Standard
- 4) Hood Access Hatches
  - a) No Longer Available
- 5) Disc Brakes
  - a) Standard
- 6) Engine HP
  - a) 365 HP, 1250 ft-lbs torque – 3000RDS Automatic - Single or Tandem - STANDARD
  - b) 285 HP, 860 ft-lbs torque - Manual (6-spd Synchronized) - Single Axle **-\$5,240.32.**
  - c) 365 HP, 1250 ft-lbs torque – Manual (9-10 speed Un-Synchronized) – Tandem **-\$2,841.87**
  - d) 455 HP, 1700 ft-lbs torque – 4500RDS Automatic – Tandem **\$15,875.00**
  - e) 430 HP, 1650 ft-lbs torque – Manual (9-10 speed Un-Synchronized) – Tandem **\$5,245.00**
- 7) Allison/International Stalk Shifter – Standard on International 7400
  - a) Steering column mounted transmission shifter and compression brake switch.
- 8) Passenger Air Ride Seat
  - a) Standard
- 9) Bug Shield – NO LONGER AVAILABLE



10) Temperature Sensor

- a) Precise Style Temperature Sensor with Pavement and Air Temp  
\$695

11) Aluminum Wheels

- a) Standard



## Hydraulic Control System Options

1) Hydraulic Control System

- a) Controls all of the hydraulically ran system on the truck, plows, dump bodies, spinner, wetting, augers, etc.  
b) Pengwyn IT485 \$20,140 Base Price  
c) Pengwyn LS485 \$23,276 Base Price  
d) Force America 6100 \$21,550 Base Price  
e) Muncie Hydraulic System Did not bid



## Plow Options

1) Front Plow

- a) 11 Foot C-style Front Plow \$8,034  
b) 12 Foot C-style Front Plow \$8,358  
c) 14 Foot C-style Front Plow \$8,679  
  
d) 11 Foot J-style Front Plow \$8,037  
e) 12 Foot J-style Front Plow \$8,362  
f) 14 Foot J-style Front Plow \$8,682



- i) Mechanical Counterbalance **\$791.63** – Uses springs mounted in the lift chains to relieve the weight the plow applies to the ground. Reduces blade wear and blade bounce.



- ii) Hydraulic Counterbalance **\$1,397** – Uses hydraulic pressure supplied by the central hydraulic system to reduce the weight of the plow on the road. Reduces blade wear and blade bounce.
- iii) 2 Plow Jacks and Shoes **\$490** – Not Standard, must be requested.

## 2) Wing Plows

### a) 9 Foot Front Wing Plow **Not available**

- Overloaded front tire, brakes, wheels
- Can't open hood w/o laying plow down
- Hits in the front, pivot point and sways back
- Passenger side door useless and tear up mirrors



### b) 9 Foot Mid Mounted Wing Plow **\$8,495**

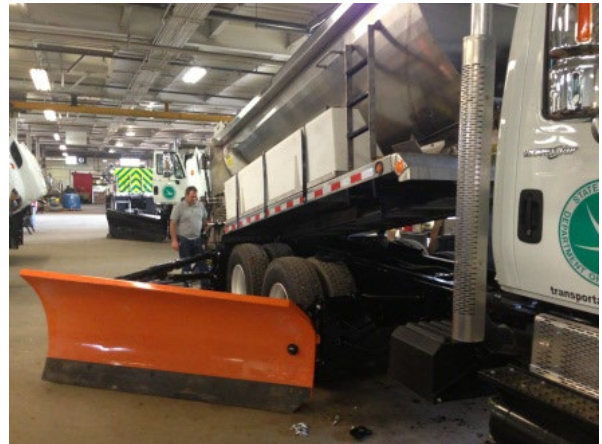
- i) Mounted Left or Right





**c) 9 foot Rear Mounted Wing Plow \$8,495**

- i) Can be mounted left, right, or can mount dual plows



**3) Underbody Snowplow (Belly Plows)**

**a) 10 Foot Folding Underbody Snowplow \$14,395**

**b) 12 Foot Folding Underbody Snowplow \$14,926**



**c) 10 Straight Underbody Snowplow \$14,078**

**d) 12 Straight Underbody Snowplow \$14,740**



## Dump Body Options

### 1) Conventional Dump Body

- a) 11 Foot 201 Stainless Steel Dump Body **\$19,893** – for the 102" CA Single Axle
- b) 13 Foot 201 Stainless Steel Dump Body **\$25,210** – for the 102" CT Tandem Axle
- c) 15 Foot 201 Stainless Steel Dump Body **\$27,576** – for the 142" CT Tandem Axle

### 2) Live Bottom Dump Bodies (Airflo, Monroe RDS Dump Bodies, Buyers, & Swenson)

- a) For use on tandem axle trucks, this is an alternative to a hopper system. Allows for better material discharge and higher capacity. All RDS bodies come standard now with cover plates.
- b) Drag Chain Style (15ft **-\$43,654**, 13ft **\$39,542**)



- c) Dual Augers Style (13ft **\$53,334**, 15ft **\$55,488**)



- d) Bi-Directional Front Discharge **\$1,545 - \$4,328** – Cross auger systems allows distribution of material in front of the drive axles, both left and right.
- e) Stainless Steel Berm Chute **\$1,240**
- f) As of the 2014 truck run, all Radius Dump Bodies with the Dual Auger option will have the inverted V shield cover to prevent salt compaction on the auger. As of the 2014 truck run, all Radius Dump Bodies will come with a conveyor shield for summertime use.

## Spreaders Options

### 1) Hopper Spreaders

- a) 11 Foot Hopper **\$34,161** – for 11ft single axle with stand

- b) 13 Foot Hopper **\$38,442** – for 13ft tandem axle with stand
- c) 15 Foot Hopper **\$39,682** – for 15ft tandem axle with stand
- d) Side Discharge Chute **\$1,122**



Hopper with Stand



Auger with Inverted "V"

- 2) Dual Under Tailgate Spreader **\$3,620**



- 3) OPI Spreadergate **\$7,968**





#### 4) Dual Auger Insert (DAI) Spreaders

- e) 11 Foot DAI **Not available due to weight issues – overloads axles**
- f) 13 Foot DAI **\$30,000** – for 13ft tandem axle with stand
- g) 15 Foot DAI **\$31,877** – for 15ft tandem axle with stand



### Hook Lift System

#### 1) Hook Lift System

SL-240 - **\$29,000 base price**

SL-2418 - **\$26,200 base price**

SL-400 - **\$34,700 base price**

Able to be utilized for multiple different purposes, dump body, stake rack, hopper, dump body, etc.



### Wetting System

#### 1) Pre-Wetting System

- a) Pre-wet salt with liquid anti icing chemicals to achieve better salt performance and increase percentage of salt product that remains on the road.
- b) Various size wetting tanks are available on contract



- i) **300 Gallon Hopper Mounted System \$3,494** – Mounts on a tandem hopper system or tandem Radius Dump Body
- ii) **180 Gallon Cab Shield Mounted \$2,737** – Standard single axle mount and capacity for wetting.

**2) Anti-Icing System – Truck-Mounted**

- a) **1235-gallon system \$12,715** – Fits a Single Axle
- b) **1800-gallon system \$14,737** – Fits a Tandem Axle
- c) **Option:** Spray bar can be a single center lane or 3 lane configuration **\$1,694**
- d) **Option:** System can also be installed on to a trailer, see prices below.
- e) **Option:** 1800 gallon inverted for RDS Dump System. **\$24,915**



**3) Anti-Icing System – Trailer-Mounted**

- a) **1235-gallon system \$12,715** – Fits a Single Axle
- b) **1800-gallon system \$14,737** – Fits a Tandem Axle
- c) **2400-gallon system \$17,014** – Fits a Tandem Axle